

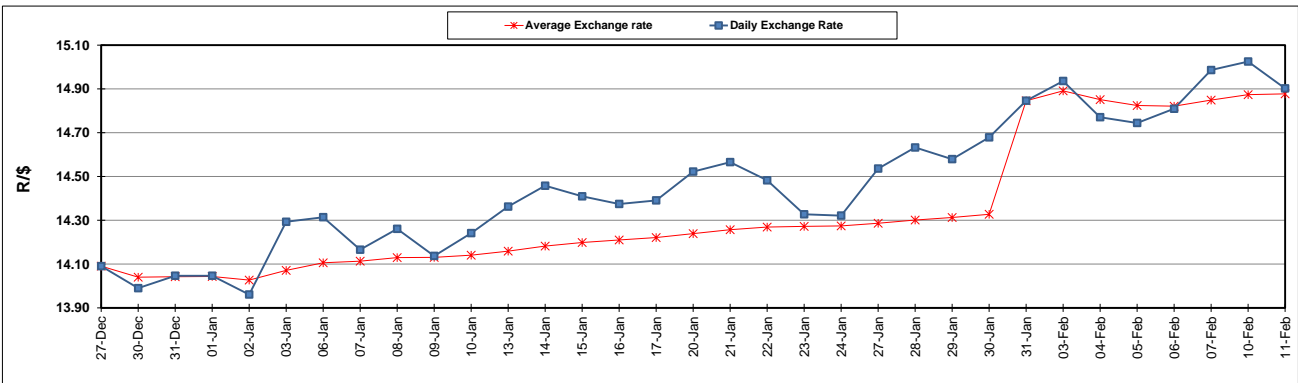
	PETROL 95 ULP	PETROL 93 ULP & LRP	DIESEL 0.05%	DIESEL 0.005%	ILL. PAR.
GAUTENG PUMP PRICE (SA c/l) AS FROM 05/02/2020	1,603.000	1,571.000	-	-	-
WHOLESALE PRICE (SA c/l) AS FROM 05/02/2020	-	-	1,457.260	1,462.660	924.728
SINGLE NATIONAL MAXIMUM RETAIL PRICE	-	-	-	-	1,176.000
BASIC FUEL PRICE - 11/02/2020 (SA c/l)	664.415	651.668	680.126	686.477	662.416
PRESS RELEASE CONTRIBUTION TO BFP 05/02/2020 - 11/02/2020 (SA c/l)	686.970	664.970	737.630	743.030	734.128
UNIT OVER/(UNDER) RECOVERY - 11/02/2020 (SA c/l)	22.555	13.302	57.504	56.553	71.712
AVERAGE BASIC FUEL PRICE 31/01/2020 - 11/02/2020	664.632	653.185	683.049	688.886	668.433
AVERAGE UNIT OVER/(UNDER) RECOVERY 31/01/2020 - 11/02/2020	27.213	16.660	56.456	56.019	66.820

ANALYSIS MOVEMENT OF AVERAGE OVER/(UNDER) RECOVERY

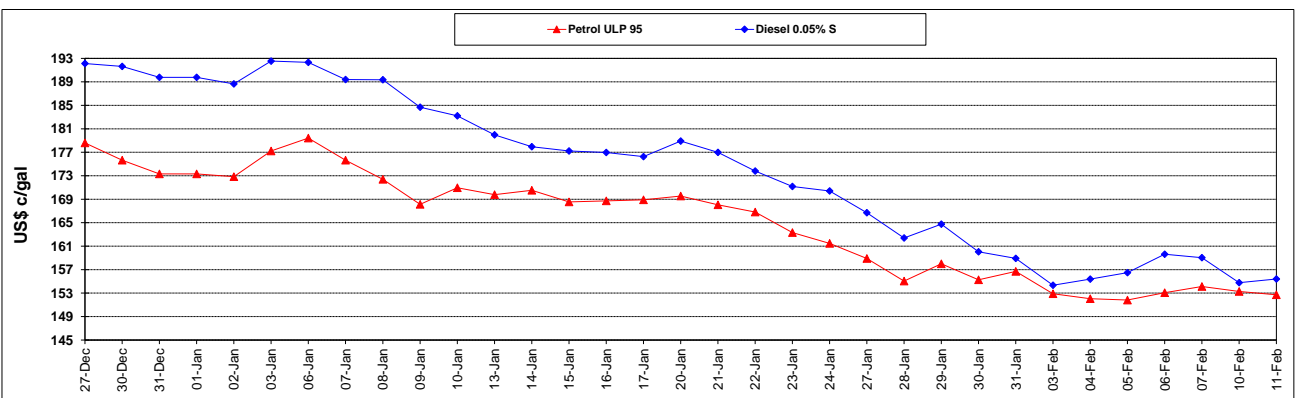
	PETROL 95	PETROL 93	DIESEL 0.05%	DIESEL 0.005%	ILL. PAR.
- MOVEMENT IN INTERNATIONAL PRODUCT PRICES	51.783	40.807	81.707	81.486	91.531
- MOVEMENT IN EXCHANGE RATE	(24.570)	(24.147)	(25.251)	(25.467)	(24.711)
AVERAGE UNIT OVER/(UNDER) RECOVERY 31/01/2020 - 11/02/2020	27.213	16.660	56.456	56.019	66.820

R/\$ EXCHANGE RATE - (R/\$14.9023 - 11/02/2020)

EXCHANGE RATE USED IN BASIC FUEL PRICE



INTERNATIONAL PRODUCT PRICES OF BASKET USED IN BASIC FUEL PRICE



BASIC FUEL PRICE IN SA CENTS PER LITRE

